



THE PROMISE

OSTEOPATHY'S PROMISE TO CHILDREN

Osteopathic Center San Diego
3706 Ruffin Road, San Diego CA 92123

Beyond Boundaries: Osteopathic Medicine for Preterm Infants

Course Director:

Francesco Cerritelli, MSc, DO, PhD



Core Faculty (in chronological order)

Francesco Cerritelli, MSc, DO, PhD
Andrea Manzotti, Osteopath, FT, DO

Instructional Format

Live, in-person training with lecture and lab format

Date: June 19-21, 2024

Time: 8:00 AM to 5:30 PM PST (daily)

Cost: \$1440, register [here](#)

Location: [NYIT College of Osteopathic Medicine](#),
101 Northern Blvd, Glen Head, NY 11545

CME: Osteopathy's Promise to Children designates this activity for a maximum of **24 AOA Category 1-A CME credits** (anticipated) and will report CME credits commensurate with the extent of the physician's participation in this activity. Our courses

allow the participant to ask questions of the presenter in either real-time.

CME Sponsor

Osteopathy's Promise to Children

Activity Website

<https://promise.ce21.com/>

Course Description

Welcome to our immersive course, "Beyond Boundaries: Osteopathic Medicine for preterm infants" designed for osteopathic practitioners seeking advanced insights into providing care for preterm infants both in the Neonatal Intensive Care Unit (NICU) and outside the hospital. This initial course will delve into key topics such as the NAME index, specific challenges in the NICU, diverse conditions treated with Osteopathic Manipulative Treatment (OMT), and considerations for varying gestational ages. This hands-on course aims to empower participants with practical skills and theoretical knowledge to enhance the care provided to infants in the NICU and outside the hospital in a transformative, clinical-, research- based learning experience at the intersection of osteopathic medicine and neonatal care.

Professional Practice Gap

Osteopathic care of preterm infants, especially within the Neonatal Intensive Care Unit (NICU), is an emerging field. There have been several studies in the past decade that have revealed the benefits that osteopathic care can provide to this vulnerable population. The majority of this research has stemmed from the work of Francesco Cerritelli and Andrea Manzotti. Their cutting-edge research out of Italy (see below for list of resources), including showing a decreased length of stay in the NICU, has potential to influence and change the practice of those who care for preterm infants in the United

States. This course will allow these practicing osteopaths to share what they have learned about providing care to preterm infants as well as sharing the faculty's experience with neonatal osteopathic research. Although several pediatric osteopathic courses have been taught previously in the United States, none of them have had a focus specifically on premature infants.

Statement of Need: This activity will address the underutilization of Osteopathic Manipulative Treatment (OMT) to help support premature infants, both in the neonatal intensive care unit (NICU) and outpatient settings. The benefits have been well-documented in international literature, but this care is not being routinely utilized to support premature infants in the United States.

* This is OMM/OMT/OPP activity and as such is part of the profession and exempt from the AOA practice gap analysis requirement.

Evidence-based Resources

Vismara L, Manzotti A, Tarantino AG, Bianchi G, Nonis A, La Rocca S, Lombardi E, Lista G, Agosti M. *Timing of oral feeding changes in premature infants who underwent osteopathic manipulative treatment.* Complement Ther Med. 2019 Apr;43:49-52. doi: 10.1016/j.ctim.2019.01.003. Epub 2019 Jan 8. PMID: 30935554.

Lanaro D, Ruffini N, Manzotti A, Lista G. *Osteopathic manipulative treatment showed reduction of length of stay and costs in preterm infants: A systematic review and meta-analysis.* Medicine (Baltimore). 2017 Mar;96(12):e6408. doi: 10.1097/MD.0000000000006408. PMID: 28328840; PMCID: PMC5371477.

Manzotti A, Cerritelli F, Esteves JE, Lista G, Lombardi E, La Rocca S, Gallace A, McGlone FP, Walker SC. *Dynamic touch reduces physiological*

arousal in preterm infants: A role for c-tactile afferents? Dev Cogn Neurosci. 2019 Oct;39:100703.

doi: 10.1016/j.dcn.2019.100703. Epub 2019 Aug 21. PMID: 31487608; PMCID: PMC6969366.

Manzotti A, Cerritelli F, Lombardi E, La Rocca S, Chiera M, Galli M, Lista G. *Effects of osteopathic treatment versus static touch on heart rate and oxygen saturation in premature babies: A randomized controlled trial.* Complement Ther Clin Pract. 2020 May;39:101116.

doi: 10.1016/j.ctcp.2020.101116. Epub 2020 Feb 8. PMID: 32379655.

Chiera M, Cerritelli F, Casini A, Barsotti N, Boschiero D, Caviglioli F, Corti CG, Manzotti A. *Heart Rate Variability in the Perinatal Period: A Critical and Conceptual Review.* Front Neurosci. 2020 Sep 25;14:561186.

doi: 10.3389/fnins.2020.561186. PMID: 33071738; PMCID: PMC7544983.

Manzotti A, Cerritelli F, Chiera M, Lombardi E, La Rocca S, Biasi P, Galli M, Esteves J, Lista G. *Neonatal Assessment Manual Score: Is There a Role of a Novel, Structured Touch-Based Evaluation in Neonatal Intensive Care Unit?* Front Pediatr. 2020 Aug 6;8:432.

doi: 10.3389/fped.2020.00432. PMID: 32850545; PMCID: PMC7424031.

McGlone F, Cerritelli F, Walker S, Esteves J. *The role of gentle touch in perinatal osteopathic manual therapy.* Neurosci Biobehav Rev. 2017 Jan;72:1-9. doi: 10.1016/j.neubiorev.2016.11.009. Epub 2016 Nov 11. PMID: 27845175.

McGlone F, Cerritelli F, Walker S, Esteves J. *The role of gentle touch in perinatal osteopathic manual therapy.* Neurosci Biobehav Rev. 2017 Jan;72:1-9. doi: 10.1016/j.neubiorev.2016.11.009. Epub 2016 Nov 11. PMID: 27845175.

Cerritelli F, Pizzolorusso G, Renzetti C, Cozzolino V, D'Orazio M, Lupacchini M, Marinelli B, Accorsi A, Lucci C, Lancellotti J, Ballabio S, Castelli C, Molteni D, Besana R, Tubaldi L, Perri FP, Fusilli P, D'Incecco C, Barlafante G. *A multicenter, randomized, controlled trial of osteopathic manipulative treatment on preterms.* PLoS One. 2015 May 14;10(5):e0127370.

doi: 10.1371/journal.pone.0127370. PMID: 25974071; PMCID: PMC4431716.

Cerritelli F, Cicchitti L, Martelli M, Barlafante G, Renzetti C, Pizzolorusso G, Lupacchini M, D'Orazio M, Marinelli B, Cozzolino V, Fusilli P, D'Incecco C. *Osteopathic manipulative treatment and pain in preterms: study protocol for a randomized controlled trial.* Trials. 2015 Mar 8;16:84. doi: 10.1186/s13063-015-0615-3. PMID: 25872943; PMCID: PMC4362649.

Pizzolorusso G, Cerritelli F, Accorsi A, Lucci C, Tubaldi L, Lancellotti J, Barlafante G, Renzetti C, D'Incecco C, Perri FP. *The Effect of Optimally Timed Osteopathic Manipulative Treatment on Length of Hospital Stay in Moderate and Late Preterm Infants: Results from a RCT.* Evid Based Complement Alternat Med. 2014;2014:243539. doi: 10.1155/2014/243539. Epub 2014 Nov 25. PMID: 25506381; PMCID: PMC4260368.

Cerritelli F, Martelli M, Renzetti C, Pizzolorusso G, Cozzolino V, Barlafante G. *Introducing an osteopathic approach into neonatology ward: the NE-O model.* Chiropr Man Therap. 2014 May 9;22:18. doi: 10.1186/2045-709X-22-18. PMID: 24904746; PMCID: PMC4046173.

Martelli M, Cardinali L, Barlafante G, Pizzolorusso G, Renzetti C, Cerritelli F. *Do placebo effects associated with sham osteopathic procedure occur in newborns? Results of a randomized controlled trial.* Complement Ther Med. 2014 Apr;22(2):197-202.

doi: 10.1016/j.ctim.2014.01.009. Epub 2014 Feb 4. PMID: 24731889.

Cerritelli F, Pizzolorusso G, Ciardelli F, La Mola E, Cozzolino V, Renzetti C, D'Incecco C, Fusilli P, Sabatino G, Barlafante G. *Effect of osteopathic manipulative treatment on length of stay in a population of preterm infants: a randomized controlled trial.* BMC Pediatr. 2013 Apr 26;13:65. doi: 10.1186/1471-2431-13-65. PMID: 23622070; PMCID: PMC3648440.

Cerritelli F, Pizzolorusso G, Renzetti C, D'Incecco C, Fusilli P, Perri PF, Tubaldi L, Barlafante G. *Effectiveness of osteopathic manipulative treatment in neonatal intensive care units: protocol for a multicentre randomized clinical trial.* BMJ Open. 2013 Feb 20;3(2):e002187.

doi: 10.1136/bmjopen-2012-002187. PMID: 23430598; PMCID: PMC3586056.

Pizzolorusso G, Turi P, Barlafante G, Cerritelli F, Renzetti C, Cozzolino V, D'Orazio M, Fusilli P, Carinci F, D'Incecco C. *Effect of osteopathic manipulative treatment on gastrointestinal function and length of stay of preterm infants: an exploratory study.* Chiropr Man Therap. 2011 Jun 28;19(1):15. doi: 10.1186/2045-709X-19-15. PMID: 21711535; PMCID: PMC3155103.

Educational Learning Objectives

At the conclusion of this activity, learners will be able to:

1. Describe the neonatal assessment manual score (NAME) for improving the clinical management of infants and how to apply it in clinical practice, with special attention to osteopathic care. (Core distinctions 1, 2, 3)
2. Recognize challenges and barriers to providing osteopathic care/OMT in the neonatal intensive care unit. (Core Distinctions 1, 2, 3, 4, 5)

3. Summarize the literature that supports the use of utilizing osteopathic medicine on preterm infants including specific indications as well as larger societal implications (e.g. reduced LOS in NICU). (Core distinctions 1, 2, 3)

4. Demonstrate specific osteopathic techniques that are beneficial in the preterm population including modifications and unique considerations for their developing anatomy. (Core distinctions 1, 2, 3)

Core Distinctions: (1) Osteopathic Principles and Practice, (2) Medical Knowledge and Its Application into Osteopathic Medical Practice, (3) Osteopathic Patient Care, (4) Interpersonal and Communication Skills in Osteopathic Medical Practice, (5) Professionalism in Osteopathic Medical Practice

References

* Manzotti A, Cerritelli F, Lombardi E, La Rocca S, Biasi P, Chiera M, Galli M and Lista G (2022) Newborns' clinical conditions are correlated with the neonatal assessment manual score (NAME). *Front. Pediatr.* 10:967301. doi: 10.3389/fped.2022.967301

* Manzotti A, Cerritelli F, Lombardi E, La Rocca S, Biasi P, Chiera M, et al. The neonatal assessment manual score: a reliability study on hospitalized neonates. *Front Pediatr.* (2021) 9:715091. doi: 10.3389/fped.2021.715091

* Manzotti A, Chiera M, Galli M, Lombardi E, La Rocca S, Biasi P, et al. The neonatal assessment manual score (NAME) for improving the clinical management of infants: a perspective validity study. *Ital J Pediatr.* (2021) 47:53. doi: 10.1186/s13052-021-01012-9

* Manzotti, A., Cerritelli, F., Chiera, M., Lombardi, E., La Rocca, S., Biasi, P., et al. (2020). Neonatal assessment manual score: is there a role of a novel, structured touch-based evaluation in neonatal intensive care unit? *Front. Pediatr.* 8:432. doi: 10.3389/fped.2020.00432

Target Audience

Medical physicians (DO or MD); Resident physicians (DO or MD); Medical students currently enrolled at a US AOA-approved college of osteopathic medicine; International osteopaths, under certain conditions. Contact cme@the-promise.org for more information.

Prerequisites

No prerequisites for the target audience

Accreditation Statement/Credit Designation

This activity has been planned and implemented in accordance with the accreditation requirements and policies of the American Osteopathic Association (AOA). This education program is designed to provide CME for osteopathic physicians and other health care professionals who practice OMM/OMT.

[Osteopathy's Promise to Children \(OPC\) is accredited by the American Osteopathic Association to provide osteopathic continuing medical education for physicians.](#)

Osteopathy's Promise to Children (OPC) designates this activity for a maximum of 24 AOA Category 1-A CME credits and will report CME and specialty credits commensurate with the extent of the physician's participation in this activity.

Instructional Method of Participation

To participate in the activity, physicians will be required to complete all of the following steps:

1. Read the brochure with the Educational Need, Learning Objectives, Faculty Disclosures and Agenda.
2. Complete the Pre-Activity Quiz via your account online.

3. Participate in the activity (for on-demand and webinar, complete the 100% viewing requirement).

4. Attest to the satisfactory participation in the activity. OPC verifies your CME attestation via your account. OPC verifies attestation against the live sign-in sheets and your CME attestation via your account.

5. Complete the Post-Activity Quiz. A grade of 80% or above is required to pass the quiz. Attempts allowed: 3. Grading method: highest grade. If you do not pass three Post-Activity Quiz attempts, the office will be notified and will make arrangements to address the issue. The course director or a content expert will contact you within one week to review any questions on course content. Once you successfully obtain a passing score, you can move onto the next step towards your certificate.

6. Complete the Post-Activity Speaker and Course Evaluation and the Outcome Survey.

7. You will receive CME credit upon successfully passing the Post-Activity Quiz and completing all Post-Activity Evaluations and Surveys.

8. Your Certificate of Completion (or Certificate of Attendance) can be accessed in your account via the orange Certificate button after ALL these steps are complete.

OPC Faculty Disclosure Declaration

Osteopathy's Promise to Children has implemented a policy to comply with the AOA and ACCME standards for Commercial Support requiring resolution of all conflicts of interest. Faculty declaring a relevant commercial interest must be identified in the activity syllabus and/or program.

In accordance with disclosure policies of AOA and the ACCME, every effort has been made to ensure all CME activities are balanced, independent, objective, and scientifically rigorous. These policies include complying with ACCME's Standards for Commercial Support and resolving

all possible conflicts of interest for the Planning committees, Authors, Faculty and staff.

Any relevant financial relationship which occurred in the twelve-month period before the time an individual was asked to assume a role controlling content in this CME activity, and which relates to the content of the educational activity, causing a conflict of interest must be disclosed here. The following faculty, presenters and planning committee members have indicated that they have no relationships with ineligible companies that could be perceived as a potential conflict of interest.

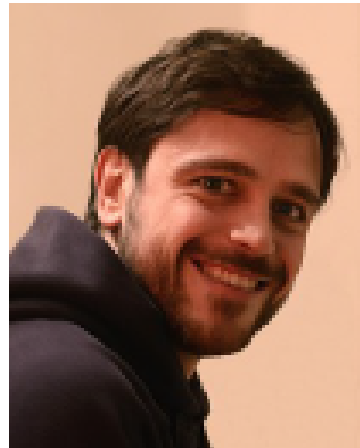
The following faculty, presenters and planning committee members have indicated that they have no relationship that could be perceived as a potential conflict of interest:

Name of Faculty or Presenter	Role(s)	Reported Financial Relationship
Francesco Cerritelli, MSc, DO, PhD	Course Director, Content	None
Andrea Manzotti, Osteopath, DO, PT	Faculty, Content	None

The following faculty member has indicated that they have a relationship that could be perceived as a potential conflict of interest:

Name of Faculty or Presenter	Role(s)	Reported Financial Relationship
There are no recorded conflicts of interest.		

Course Director



Francesco Cerritelli, MSc, DO, PhD

Dr. Francesco Cerritelli, MSc, DO, PhD will speak on multiple topics within the course. He is a graduate of the University of l'Aquila in Italy, received his diploma of osteopathy from the Accademia Italiana Osteopatia Tradizionale, in Pescara, Italy, received a master's in public health from the Imperial College London in the United Kingdom, and received his doctorate in neuroscience and imaging from the University of Chieti. He has been in private practice for over fifteen years. He was a research fellow on the cardiovascular research project in Chieti, Italy from 2004-6. He served as the Director of the Research Department of the Accademia Italiana Osteopatia Tradizionale from 2009-2017 and lectured there on neuroscience and osteopathic clinical evaluation and technique. He has also lectured on cranial-sacral techniques at the International College of Osteopathic Medicine in Milan, Italy. Dr. Cerritelli lectured on Research, Epidemiology, Statistics, Pediatrics at Malta Icom Educational. He was the President of the European Institute for

Evidence Based Osteopathic Medicine from 2009 - 2014. He is the President of C.O.M.E., the Centre for the Osteopathic Medicine Collaboration, ONLUS Foundation. He is a research fellow for the Australian Research Center in Complementary & Integrative Medicine (ARCCIM) – University of Technology Sidney – Australia. Since 2011 to the present, he serves as a scientific reviewer of Cochrane, the Journal of Neurology Neurosurgery and Psychiatry, Pediatrics, Plos One, International Journal of Osteopathic Medicine and the Journal of American Osteopathic Association. He is the author of several papers published in peer-reviewed journals and more than 50 conference proceedings. [PubMed](#) and [Scholar Google](#).

Faculty



Andrea Manzotti, Osteopath, c

Andrea Manzotti, Osteopath, FT, DO, will speak on multiple topics within the course. Mr .Manzotti holds a Master's degree in Biostatistics for Clinical Research and Scientific Publication. He graduated from the University of Padua with a Master's level in Biostatistics and from Issa, USA with a Master of Fitness and Science. He then graduated from the University of Milan as a rehabilitation therapist. He

then graduated from the Italian Osteopathic Institute. He has been a Physiotherapist since 1990 and Osteopath since 1997, specializing in sports and neonatal/pediatric fields. He has been a practicing pediatric osteopath for over a decade at the Vittore Buzzi Children's Hospital in Milan where he works in the intensive care department as a clinician and head of osteopathic research.. He is a founding member and lecturer at the SOMA - Milan Osteopathy Institute. He also lectures for the two-year Master's degree in osteopathic medicine at the University of Ferrara for pediatric disciplines in 2017/2019. He teaches pediatrics students at the Osteopathic Center for Children in London. Committed to the dissemination of osteopathy in the various fields of specialist medicine, he is a speaker at numerous conferences in the pediatric-neonatalogical and dental fields. He is the author of two books in the pediatric field and 8 publications in indexed scientific journals.

CME Policy Statements

Osteopathy's Promise to Children (OPC) offers both live events and on-demand sessions using the same caliber of speakers who would present at in-person events. OPC offers online opportunities for Continuing Medical Education (CME) credits. Each course or online event offers AOA Category 1-A CME credits. CME sessions are delivered on the CE21 Learning Management System. Once you have used the Learning Center, you will have a profile established that will allow you to access all available sessions, view speaker profiles, track CME credits gained through the system, and generate CME certificates based on the sessions completed. All OPC CME activities have a content expert available for any questions on content from CME participants during the life plus one week of the activity. The content expert will answer participant questions within one week of an inquiry.

Contact us at cme@the-promise.org with any questions or comments.

Disclaimer

The information in this educational activity is for general medical education purposes only and is not meant to substitute for the independent medical judgment of a physician relative to diagnostic and treatment options of a specific patient's medical condition. The viewpoints expressed in this CME activity are those of the authors/faculty. They do not represent an endorsement by OPC. In no event will OPC be liable for any decision made or action taken in reliance upon the information provided through this CME activity.

Statement of Professional Ethics & Standards

Osteopathy's Promise to Children CME courses will foster an educational atmosphere of tolerance and mutual respect concerning gender, race, developmental challenges, sexual orientation, and professional background. Furthermore, these courses will adhere to the highest standards of osteopathic medicine's professional ethics especially in regard to patient, student, and physician faculty communication and interactions. This includes clear informed consent when participating in educational exercises, and only utilizing osteopathic techniques and practices designed to educate practitioners and/or compassionately and appropriately address patient suffering through osteopathic diagnosis, and treatment. Any deviation of these professional standards by physician faculty, staff, or student during a given course will not be tolerated.

Evidence-Based Content

It is the policy of the OPC to ensure that the content contained in this CME activity is valid, fair, balanced, scientifically rigorous, and free of commercial bias. Evidence-based medicine – first

“coined” in 1991 (JAMA). “Conscientious, explicit, and judicious use of current best evidence in making decisions about the care of individual patients.” And, “Good doctors use both individual clinical expertise and the best available external evidence, and neither alone is enough.” BMJ 1996).

Disclosure Policy

It is the policy of the OPC Continuing Education Committee to ensure balance, independence, objectivity and scientific rigor in all its educational activities. All persons in a position to control the content of an educational activity (i.e., activity planners, presenters, faculty, authors) participating in an educational activity provided by the OPC are required to disclose to the provider any relevant financial relationships with any commercial interest. OPC must determine if the individual's relationships may influence the educational content and resolve any conflicts of interest prior to the commencement of the educational activity. The intent of this disclosure is not to prevent individuals with relevant financial relationships from participating, but rather to provide learners information with which they can make their own judgments. Faculty disclosures will be made in the syllabus and/or during faculty introductions. The audience is advised that one or more presentations in this continuing education activity may contain references of unlabeled or unapproved uses of drugs or devices.

Resolution/Mechanism of Identified Conflict of Interest

Independent sources of review include the following: All disclosures will be reviewed by the activity Course Director, Physician Leadership Team, and Executive Director for identification of conflicts of interest. Reviewers, working with the activity directors, will document the mechanism(s) for management and resolution of the conflict of

interest, and final approval of the activity will be documented prior to implementation.

Any of the mechanisms below can/will be used to resolve conflict of interest:

- Peer review for valid, evidence-based content of all materials associated with an educational activity by the activity director.
- Limit content to evidence with no recommendations
- Introduction of a debate format with an unbiased moderator (point-counterpoint)
- Inclusion of moderated panel discussion
- Publication of a parallel or rebuttal article for an article that is felt to be biased
- Limit equipment representatives to providing logistics and operation support only in procedural demonstrations.
- Divestiture of the relationship by faculty: The reviewer should be a physician or other scientist with knowledge of the specialty area being reviewed and oftentimes the Executive Director will perform this first review and can then appoint a physician as an independent reviewer. The independent reviewer is not involved in the planning of this CME Activity and cannot have a relationship with any corporate entity supporting the CME activity. The reviewer should have a copy of this policy and a copy of the Standards for Commercial Support to fully grasp their responsibilities as the reviewer.

Off-Label or Unapproved Use of Drugs or Devices

It is the policy of the OPC to require the disclosure of all references to off-label or unapproved uses of drugs or devices prior to the presentation of educational content. The audience is advised that this continuing medical education activity may contain reference(s) to off-label or unapproved uses

of drugs or devices. Please consult the prescribing information for full disclosure of approved uses.

Cancellation and Refund Policy

OPC reserves the right to change the delivery format, delay, or cancel a CME event due to any unforeseen circumstances. If an event is canceled, OPC will refund your registration fee in full. OPC will not be held responsible for the registrant's travel, hotel or other costs incurred resulting from the cancellation. Substitutions of other CME events may be made at any time without an additional charge; email cme@the-promise.org with your request. Refunds will be issued for all cancellations received two weeks prior to the start of the event. However, an administrative fee of \$100.00 will be charged for all refunds. "No shows" are subject to the full CME event fee. Cancellations/substitutions must be made in writing by email to cme@the-promise.org. No refunds or credits will be issued once the CME event has started.

Grievance Policy

All grievances should be initially directed in writing to the OPC Executive Director by email to director@the-promise.org who will share them with the OPC CME Program Committee. Grievances will receive a response within 30 days of receipt. If you do not receive a satisfactory response, you may notify the Council on Continuing Medical Education, AOA, 142 East Ontario St., Chicago, IL 60611.

Zoom Privacy Notice

When you join meetings and webinars hosted by OPC on Zoom, your profile information, including your name and profile picture, may be visible to other participants. Your name and email address will also be visible to the account owner, Osteopathy's Promise to Children, and hosts when you join meetings or webinars on their account

while you're signed in. The account owner and others in the meeting can share this information with apps and others.

CE21 Online Platform Privacy Statement

In accordance with the Accreditation Council for Continuing Medical Education (ACCME), accredited AOA providers that participate in CME activities on the Internet shall have a separate privacy policy for CME activities. The CME programs offered by the Osteopathy's Promise to Children (OPC) respect and value your privacy and the confidentiality of the information you choose to share with us. We are committed to the protection of this information and will ensure your privacy when participating in CME activities on our website. You may visit OPC's website without identifying yourself or revealing any personal information. If you choose to provide personally identifiable information (any information by which you can be identified), it will only be used to support your relationship with the Learning Center programs. Read more about OPC CE21 Online Education Privacy Statement [here](#).

Special Assistance

OPC complies with the Americans with Disabilities Act §12112(a). If any participant is in need of special assistance or has any dietary restrictions, please email us at cme@the-promise.org or call 619-548-8815 for assistance.

Your enrollment in the Program constitutes your release, waiver and consent to the following policies:

LIABILITY RELEASE AND WAIVER

THIS PROGRAM MAY INVOLVE PHYSICAL ACTIVITY, INCLUDING CONTACT BY AND WITH FACULTY AND OTHER COURSE PARTICIPANTS. THIS PHYSICAL ACTIVITY,

INCLUDING BUT NOT LIMITED TO PHYSICAL DIAGNOSTICS AND MANUAL THERAPEUTICS, COULD POSSIBLY ENTAIL RISK FOR COURSE PARTICIPANTS OF NEW INJURY OR AGGRAVATION OF PRE-EXISTING CONDITIONS. ALL COURSE PARTICIPANTS ACKNOWLEDGE AND AGREE TO ASSUME ALL RESPONSIBILITY AND RISK FOR ALL LOSSES AND DAMAGES, INCLUDING BUT NOT LIMITED TO ANY BODILY INJURY, DEATH, AND PROPERTY DAMAGE, ARISING OUT OF OR INCIDENT TO (I) ATTENDING THE COURSE, (II) PARTICIPATING IN THE COURSE, (III) USING EQUIPMENT OR FACILITIES DURING THE COURSE, AND (IV) USING OR MISUSING ANY KNOWLEDGE OR INFORMATION OBTAINED OR DERIVED FROM THE COURSE.

INDEMNITY

All course participants acknowledge and agree to indemnify, defend, and hold harmless OPC, OPC's officers, directors, employees, agents, affiliates, licensors, partners, independent contractors, suppliers and subcontractors from and against all claims, actions, suits, proceedings, losses, obligations, damages including but not limited to any bodily injury, death, and property damage, liabilities, costs, debt and expenses, whether known or unknown, anticipated or unanticipated, arising out of or incident to (i) attending the course, (ii) participating in the course, (iii) using the equipment or facilities during the course, or (iv) using or misusing any knowledge or information obtained or derived from the course at or outside of the course location. OPC reserves the right, at course participant's expense, to assume the exclusive defense and control of any matter for which course participant is required to indemnify OPC and course participant agrees to cooperate

with OPC's defense of these claims. Course participant agrees not to settle any matter without the prior written consent of OPC. OPC will use reasonable efforts to notify course participant of any such claim, action, suit, or proceeding upon becoming aware of it. It is the responsibility of all participants to use the information provided within the scope of their professional license or practice.

CONSENT FOR USE OF PHOTOGRAPHIC IMAGES

Registration and attendance at or participation in OPC meetings and other activities constitutes an agreement by the registrant to OPC's use and distribution (both now and in the future) of the registrant or attendee's image or voice in photographs, videotapes, electronic reproductions, and audiotapes of such events and activities. To opt out of the agreement to consent of use of photographic images you must notify OPC in writing stating your desire to opt out by emailing OPC at cme@the-promise.org prior to the start of the event.

I HAVE READ THIS RELEASE OF LIABILITY AND WAIVER, THE INDEMNITY PROVISIONS AND THE CONSENT TO USE MY IMAGE, FULLY UNDERSTAND ITS TERMS, UNDERSTAND THAT I HAVE GIVEN UP SUBSTANTIAL RIGHTS BY ENROLLING IN THE PROGRAM AND DO SO VOLUNTARILY.

Policy Consent Notice

NOTE: Prior to purchasing or registration for this program we ask that you review the Policies as stated above. These policies are in every Course Brochure and on the CE21 (registration) platform when you purchase or register for any product. Your enrollment in the Program constitutes your release, waiver and consent to the stated policies.

Contacts

Osteopathy's Promise to Children
3706 Ruffin Road, San Diego, CA 92123
cme@the-promise.org
619-548-8815

For questions regarding the course content of this program, contact: Beth Levendoski, Executive Director at director@the-promise.org.

For questions regarding CME's, please contact: CME Administrator at cme@the-promise.org.



THE PROMISE

OSTEOPATHY'S PROMISE TO CHILDREN

Osteopathic Center San Diego
3706 Ruffin Road, San Diego CA 92123

Beyond Boundaries: Osteopathic Medicine for Preterm Infants

Offered through Osteopathy's Promise to Children
at the Osteopathic Center San Diego Conference Center
San Diego, California

June 19-21, 2024

Course Director: Francesco Cerritelli, MSc, DO, PhD

Wednesday, June 19, 2024

Start Time	Duration	Topic	Lecture / Lab	Speaker
8:00 AM	30	Welcome and Course Overview	Lecture	Cerritelli
8:30 AM	120	Promoting Research in Osteopathic Care for Preterm Infants	Lecture	Cerritelli
10:30 AM	90	Introduction to Osteopathic Considerations for Preterm Infants	Lecture/ Lab	Manzotti
12:00 PM		Lunch		
1:00 PM	60	Challenges in Treating Preterm Infants in the NICU	Lecture/ Lab	Manzotti
2:00 PM	60	Hands-on: Practicing different types of touch in simulated environments	Lab	Cerritelli
3:00 PM	45	Understanding the NAME Index and its Clinical Applications	Lecture/ Lab	Manzotti
3:45 PM	60	Hands-on: Practicing NAME in simulated environments	Lab	Manzotti/ Cerritelli
4:45 PM	15	Wrap-up/Q&A	Lecture	Cerritelli
5:00 PM		Adjourn		
TOTAL	8h			

Thursday, June 20, 2024

Start Time	Duration	Topic	Lecture / Lab	Speaker
8:00 AM	60	Conditions Treated with OMT in the NICU and outside the NICU	Lecture/ Lab	Cerritelli
9:00 AM	45	Gestational Age-Specific Considerations in OMT	Lecture/ Lab	Manzotti
9:45 AM	135	Hands-on: Integrating Osteopathic Techniques	Lab	Manzotti/ Cerritelli
12:00 PM		Lunch		
1:00 PM	60	Assessment Considerations: Working around lines, vents, and other medical equipment	Lecture/ Lab	Manzotti
2:00 PM	60	Hands-on: Assessment	Lab	Manzotti/ Cerritelli
3:00 PM	45	Developmental Considerations and Neurologic Exams in Varying Gestational Ages	Lecture/ Lab	Cerritelli
3:45 PM	60	Hands-on: Practicing OMT techniques in simulated environments	Lab	Manzotti/ Cerritelli
4:45 PM	15	Wrap-up/Q&A	Lecture	Cerritelli
5:00 PM		Adjourn		
TOTAL	8h			

Friday, June 21, 2024

Start Time	Duration	Topic	Lecture / Lab	Speaker
8:00 AM	30	NICU Follow-Up: Insights and Strategies	Lecture/ Lab	Cerritelli
8:30 AM	60	Addressing Specific Premie Conditions with OMT (ROP, NEC, BPD, etc.)	Lecture/ Lab	Manzotti
9:30 AM	150	Hands-on: specific conditions	Lab	Manzotti/ Cerritelli
12:00 PM		Lunch		
1:00 PM	60	Addressing Specific Premie Conditions with OMT (ROP, NEC, BPD, etc.)	Lecture/ Lab	Cerritelli
2:00 PM	120	Hands-on: specific conditions	Lab	Manzotti/ Cerritelli
4:00 PM	30	Sharing Best Practices and Collaborative Opportunities	Lecture	Manzotti
4:30 PM	30	Wrap-up/Q&A	Lecture	Cerritelli
5:00 PM		Adjourn		
TOTAL	8h			



THE PROMISE
OSTEOPATHY'S PROMISE TO CHILDREN

Osteopathic Center San Diego
3706 Ruffin Road, San Diego CA 92123