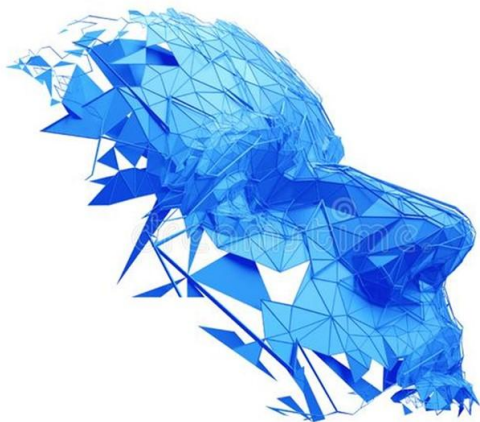


# The Face: Lessons I Learned From a Master

**Course Director:**  
**Raymond J. Hruby, DO**



## Faculty

Raymond J. Hruby, DO, MS, FAAO (Dist)

## Instructional Format

Internet (on-demand) event with slides and audio.

**CME:** Osteopathy's Promise to Children (OPC) designates this activity for a maximum of **1.75 AOA Category 1-A credits** & will report CME and specialty credits commensurate with the extent of the physician's participation in this activity.

**Cost:** \$120 for series, register [here](#)

## CME Sponsor

Osteopathy's Promise to Children

## Activity Website

<https://promise.ce21.com/>

## Statement of Need

This course will address osteopathic clinicians', as well as other practicing clinicians', needs to improve knowledge, competence and/or performance for the treatment of head and facial somatic dysfunctions by using advanced principles of osteopathic cranial manipulative medicine (OCMM).

## Course Description

Somatic dysfunctions of the facial structures can be extremely challenging for the clinician. Effective treatment varies for patients with problems such as temporomandibular joint dysfunction, acute or chronic sinusitis, craniofacial pain, and many other clinical presentations. This course will offer participants the opportunity to further explore the neuroanatomic basis for how OMT affects physiologic functions, and meets the needs of interested physicians who want to increase their knowledge in this area of medical practice, including assessment of existing and emerging therapies, as they develop customized treatment plans via interactive case scenarios. This session will focus on advanced approaches as taught by some of the early pioneers in the field of OCMM.

## Educational Learning Objectives

Upon completion of this course, the participant will be able to:

- Describe the descriptive and functional anatomy of the face in the context of the Primary Respiratory Mechanism
- Discuss somatic dysfunctions of the facial structures and their impact on related physiologic functions
- Compare and contrast the approach of a Master osteopathic physician to facial somatic dysfunction with current clinical thought.
- Core Competencies addressed:  
Osteopathic Philosophy/Osteopathic Manipulative Medicine & Medical Knowledge

## Evidence-based Resources

Liem, T. Cranial Osteopathy Principles and Practice, 2nd ed. Edinburgh: Elsevier Churchill Livingstone; 2004: 223-289.

Magoun, H. Sr. Osteopathy in the Cranial Field, 3rd ed. Kirksville, MO: The Journal Printing Company; 1976:181-204, 215,-216.

## Target Audience

This activity is open for all osteopathic and medical physicians (DO/MD), Dentist (DDS/DMD), Medical Student (DO/MD), and International Osteopaths.

## Prerequisites

Approved (OPC/OCA/SCTF) 40-hour Introduction to Osteopathy in the Cranial Field course.

## Instructional Method of Participation

To participate in the activity, physicians will be required to take the following steps:

1. Read the brochure with Statement of Need, Educational Learning Objectives, Faculty Disclosures and Agenda.
2. Complete Pre-Activity Test. (Via your account online.)
3. Participate in the activity.
4. Attest to the satisfactory participation in the activity. OPC verifies attestation against the live sign-in sheets and your CME attestation via your account.
5. Complete Post-Activity Test via your account. (A grade of 75% or above is required to pass the quiz. Attempts allowed are 3. And the grading method is the highest grade achieved.)
6. Complete the Post-Activity Speaker and Course Evaluation and the Outcome Survey.
7. You will receive CME credit upon successfully passing the Post-Activity Test and completing all Post-Activity Evaluations and Surveys..
8. Your Certificate of Completion (or Certificate of Attendance) can be accessed in your account via the orange Certificate button after ALL these steps are complete.

### Accreditation Statement/Credit Designation

This activity has been planned and implemented in accordance with the accreditation requirements and policies of the American Osteopathic Association (AOA). This education program is designed to provide CME for osteopathic physicians and other health care professionals who practice OMM/OMT.

[Osteopathy's Promise to Children \(OPC\) is accredited by the American Osteopathic Association to provide osteopathic continuing medical education for physicians.](#)

Osteopathy's Promise to Children (OPC) designates this activity for a maximum of 1.75 AOA Category 1-A credits and will report CME and specialty credits commensurate with the extent of the physician's participation in this activity.

### OPC Faculty Disclosure Declaration

Osteopathy's Promise to Children has implemented a policy to comply with the AOA and ACCME standards for Commercial Support requiring resolution of all conflicts of interest. Faculty declaring a relevant commercial interest must be identified in the activity syllabus and/or program. In accordance with disclosure policies of AOA and the ACCME, every effort has been made to ensure all CME activities are balanced, independent, objective, and scientifically rigorous. These policies include complying with ACCME's Standards for Commercial Support and resolving all possible conflicts of interest for the Planning committees, Authors, Faculty and staff.

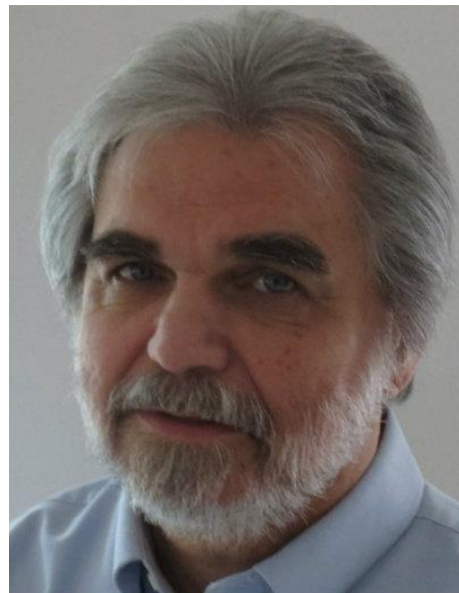
The following faculty, presenters and planning committee members have indicated that they have no relationship that could be perceived as a potential conflict of interest:

Name of Faculty or Presenter	Role(s)	Reported Financial Relationship
Raymond J. Hruby, DO, MS, FAAO	Course Director and Planning Committee	Dr. Hruby is a CME Consultant and Publications Editor to OPC.

The following faculty member has indicated that they have a relationship that could be perceived as a potential conflict of interest:

Name of Faculty or Presenter	Role(s)	Reported Financial Relationship
There are no recorded conflicts of interest.		

### Course Director



Raymond J. Hruby, DO, MS, FAAO (Dist)

Dr. Raymond J. Hruby, DO, MS, FAAO (Dist). will speak on "The Face – Lessons I Learned from a Master". Dr. Hruby is a graduate of the College of Osteopathic Medicine and Surgery in Des Moines, Iowa. He is board certified in Family Medicine/OMT by the American Board of Osteopathic Family Practice and Osteopathic Manipulative Medicine by the American Osteopathic Board on Special Proficiency in Osteopathic Manipulative Medicine. Dr. Hruby completed a traditional internship at Osteopathic Hospital of Maine, Portland, ME and was in private practice for sixteen years. He is retired as a Professor and Chair of the Department of Osteopathic Manipulative Medicine at COMP, he continues consulting with the school's Department of NMM/OMM on teaching, research, curriculum analysis and development, new faculty mentorships and Predoctoral OMM Fellows. He is involved with WUHS's Interprofessional Education program, and lectures part-time in the Graduate School of Basic Medical Sciences, among others. He is a fellow of the American Academy of Osteopathy. He holds a Certificate of Proficiency in Osteopathy in the Cranial Field from the Osteopathic Cranial Academy. His memberships include: AOA, AAO, ACOFP, OCA, OPSC.

### Commercial Support Statement

The AOA requirements for category 1-A CME require notice of commercial support. If monetary or in-kind contributions are given to a CME sponsor that are used to pay for all or part of the costs of a CME activity, it must be reported that the program event was commercially supported. No commercial support was received for this program.

### Course Cancellation & Refund Policy

By submitting an application for this course, the applicant (the "Applicant") agrees that fifteen percent (15%) of the total registration fee is a non-refundable administrative charge. If after submitting a course application the Applicant desires to cancel his or her registration, the Applicant must notify Osteopathy's Promise to Children ("OPC") in writing no less than fourteen

(14) calendar days prior to the initial start date for the course. If Applicant timely and properly notifies OPC of its cancellation, OPC will issue a refund to Applicant in the amount of eighty-five percent (85%) of his or her total registration fee. If OPC receives a notice of cancellation less than fourteen (14) days prior to the initial start date for the course, OPC will not issue a refund. Unless Applicant timely and properly notices OPC pursuant to this policy, OPC will not issue a refund for an applicant's failure to attend the course.

### Disclaimer

The information in this educational activity is for general medical education purposes only and is not meant to substitute for the independent medical judgment of a physician relative to diagnostic and treatment options of a specific patient's medical condition. The viewpoints expressed in this CME activity are those of the authors/ faculty. They do not represent an endorsement by OPC. In no event will OPC be liable for any decision made or action taken in reliance upon the information provided through this CME activity.

### Liability Release

This program may involve physical activity, including contact by and with faculty and other course participants. This physical activity, including but not limited to physical diagnostics and manual therapeutics, could possibly entail risk for course participants of new injury or aggravation of pre-existing conditions. All course participants acknowledge and agree to assume all responsibility and risk for all losses and damages, including but not limited to any bodily injury, death, and property damage, arising out of or incident to (i) attending the course, (ii) participating in the course, (iii) using equipment or facilities during the course, and (iv) using or misusing any knowledge or information obtained or derived from the course. All course participants acknowledge and agree to indemnify, defend, and hold harmless OPC, OPC's officers, directors, employees, agents, affiliates, licensors, partners, independent contractors, suppliers and

subcontractors from and against all claims, actions, suits, proceedings, losses, obligations, damages including but not limited to any bodily injury, death, and property damage, liabilities, costs, debt and expenses, whether known or unknown, anticipated or unanticipated, arising out of or incident to (i) attending the course, (ii) participating in the course, (iii) using the equipment or facilities during the course, or (iv) using or misusing any knowledge or information obtained or derived from the course at or outside of the course location. OPC reserves the right, at course participant's expense, to assume the exclusive defense and control of any matter for which course participant is required to indemnify OPC and course participant agrees to cooperate with OPC's defense of these claims. Course participant agrees not to settle any matter without the prior written consent of OPC. OPC will use reasonable efforts to notify course participant of any such claim, action, suit, or proceeding upon becoming aware of it. It is the responsibility of all participants to use the information provided within the scope of their professional license or practice.

### Statement of Professional Ethics & Standards

Osteopathy's Promise to Children CME courses will foster an educational atmosphere of tolerance and mutual respect concerning gender, race, developmental challenges, sexual orientation, and professional background. Furthermore, these courses will adhere to the highest standards of osteopathic medicine's professional ethics especially in regard to patient, student, and physician faculty communication and interactions. This includes clear informed consent when participating in educational exercises, and only utilizing osteopathic techniques and practices designed to educate practitioners and/or compassionately and appropriately address patient suffering through osteopathic diagnosis, and treatment. Any deviation of these professional standards by physician faculty, staff, or student during a given course will not be tolerated.

### Contacts

Osteopathy's Promise to Children  
3706 Ruffin Road, San Diego, CA 92123  
[cme@the-promise.org](mailto:cme@the-promise.org)  
619-548-8815

For questions regarding the content of this program, contact:  
Beth Levendoski, Executive Director  
at [director@the-promise.org](mailto:director@the-promise.org).

For questions regarding CME's, please contact:  
CME Administrator at [cme@the-promise.org](mailto:cme@the-promise.org).



# THE PROMISE

OSTEOPATHY'S PROMISE TO CHILDREN

Osteopathic Center San Diego  
3706 Ruffin Road, San Diego CA 92123